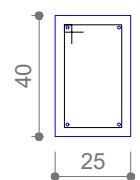
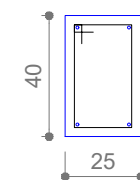


SEÇÃO A-A
ESC 1:25

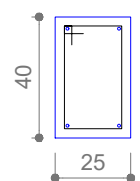


SEÇÃO A-A
ESC 1:25

SEÇÃO A-A
ESC 1:25

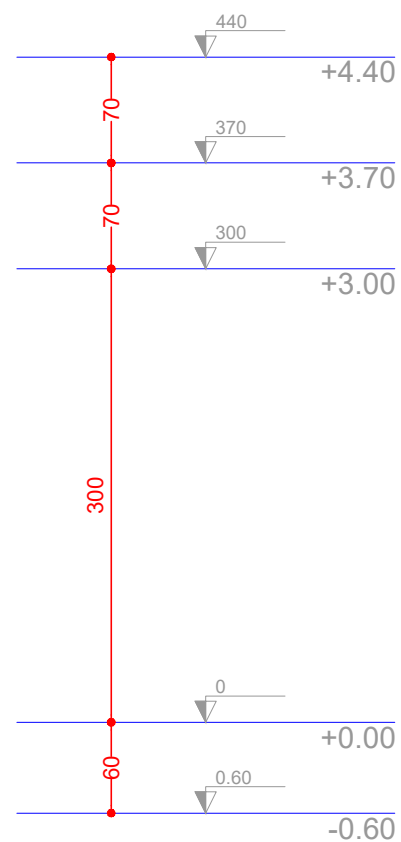


SEÇÃO A-A
ESC 1:25



19

23 N1 ø5.0 C=11



CORTE B-B
escala 1:50

AÇO	DIAM (mm)	C.TOTAL (m)	QUANT (Barras)	PESO (kg)
CA50	10.0	56.1	5	34.6
CA60	5.0	81.5	-	12.5
PESO TOTAL (kg)				
CA50	34.6			
CA60	12.5			

Área de forma = 13.86 m²

PROJETO ESTRUTURAL

VIGAS